

# Product Data

## High Performance Chemical Resistant Coating

Belzona® 4311 (Magma CR1) is a high performance two-component barrier coating for protecting surfaces against the effects of chemical attack.

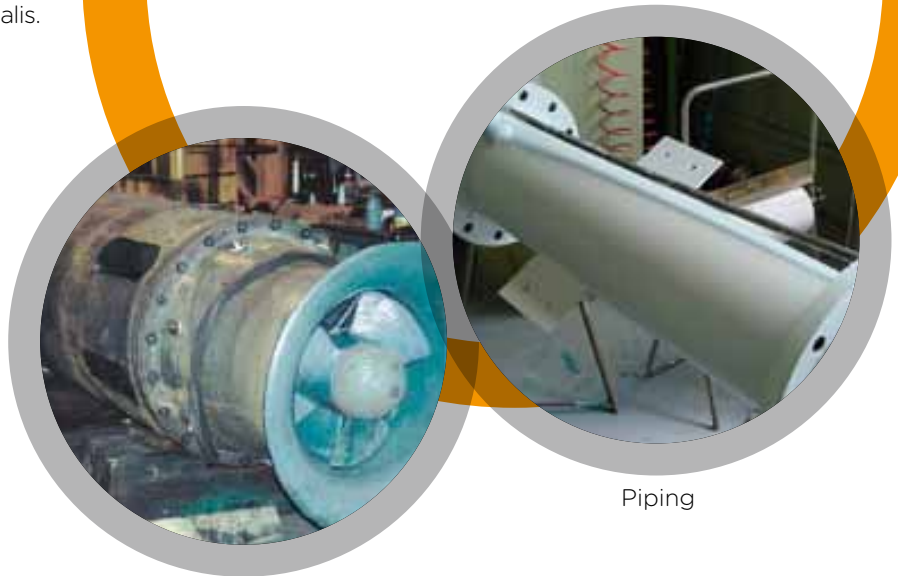
This solvent free coating provides outstanding resistance to a broad range of chemicals, especially acids and alkalis.

### Belzona® 4311 (Magma CR1) will:

- Simplify maintenance procedures
- Cut downtime
- Provide long term protection

Belzona® 4311 (Magma CR1) will bond to almost any rigid surface including metals, concrete, brick, tile, and glass without the need for specialist tools.

## Belzona® 4311 Magma CR1



Pumps

Piping



Chemical Containment Areas

Sumps

### Applications for Belzona® 4311 (Magma CR1) include:

- Containment areas
- Pump bases
- Pump casings
- Heavy spillage areas
- Piping
- Drains and channels
- Sumps
- Walkways
- Storage tanks

# Belzona® 4311 (Magma CR1) is:

# Belzona® 4311

Magma CR1

## Simple

- Easily mixed and applied
- No special tools required
- No fasteners required

## Safe

- Solvent free
- No tainting of food stuffs
- Meets U.S.D.A. requirements for incidental food contact

## Versatile

- Bonds to almost any rigid surface
- Available also as a paste grade - Belzona® 4301 (Magma CR1 Hi-Build)

## Effective

- Outstanding resistance to a broad range of chemicals
- Fast curing for minimal downtime
- Seamless monolithic finish



Chemical Storage Tanks

For more information, please contact your local Belzona representative.



## TECHNICAL SUPPORT

Belzona has corporate offices around the world and a global distribution network of over 140 Distributors operating in 120 countries. Local support is provided by trained Technical Consultants who will diagnose the problem, recommend the solution, and provide 24-hour, on-site application consultation and supervision.



ISO 9001:2008  
Q 09335  
ISO 14001:2004  
EMS 509612

Belzona products are manufactured under an ISO 9000 Registered Quality Management System

  
**BELZONA®**  
Repair • Protect • Improve